

Builders adapt to changing times

Project home designs now accommodate the changing demographics writes Gold Coast-based market researcher Colleen Coyne

FOR generations, the eldest child of a larger family has pleaded for his or her own space.

Even in the popular '70s sitcom, *The Brady Bunch*, Greg Brady begged his parents for a room of his own away from the one he shared with his brothers.

He eventually got his way when his parents converted their attic.

Nothing has really changed.

For older teenagers or younger adults still living at home, there is still the competition for the biggest room or for the privacy of their own bathroom. AustraliaScan consultant for Quantum Market Research David Chalke said the multigenerational household was a growing trend.

Generation Y has been closely studied and it has been found that more than 50 per cent of the 18 to 30 year olds were uncommitted to mortgages, children or relationships.

Of these, 66 per cent lived at home.

Being the children of the baby boomers they enjoy the fruits of their parents' labours and the home being provided.

Research indicated alternatives to the master bedroom with ensuite and walk-



Clarendon Homes Savannah 49 suits a larger family

in wardrobe, plus three standard bedrooms of 3x3m, are now being offered by a number of southeast Queensland builders across a range of price categories.

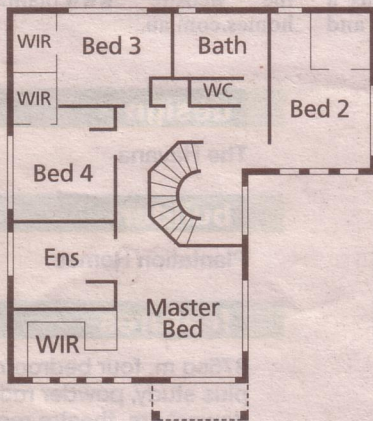
Market research consultant Colleen Coyne said many builders now offered second, third and fourth bedrooms of 11 to 12sq m, plus built-in robes.

"Unlike the old-fashioned standard 9sq m bedroom, these more generous rooms are large enough for a double bed and a computer desk," she said.

Ms Coyne also pointed to housing designs, which particularly suit blended families, perhaps with one older teenager or young adult at home, or an older parent or relative visiting or living with the family.

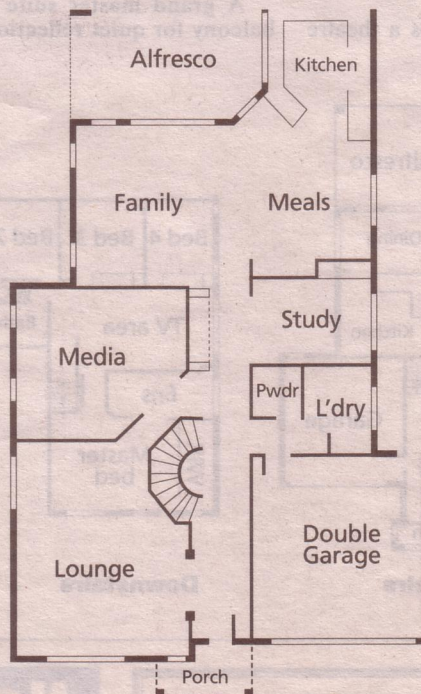
The designs include four-bedroom, two-storey house with ground-floor master bedroom with walk-in wardrobe and ensuite and upstairs second bedroom of 3.69x3.43m, plus walk-in wardrobe; four bedroom, two-storey houses with ground floor or upstairs master bedroom with walk-in robe and ensuite, another ensuite to a second bedroom of 10sq m to 14sq m and a two-way bathroom shared by the remaining two bedrooms; separate studios over garages; and ground-floor guest room with own ensuite or walk-in wardrobe.

Clarendon Homes Savannah 49 and Adenbrook Homes' two-storey Nuvo design are two examples of the trend.



Upstairs

The Nuvo



Porch

Editor
Lauren Barker – 5584 2219

Advertising
Faye Stebbing – 5584 2174

Editorial
Dean Publications – 5591 5623

Cover
Gold Coast designer Sandra Kruger showcases some smooth moves in this Emphraim Island villa. See story page 116

Cover pic – Supplied by Mirvac